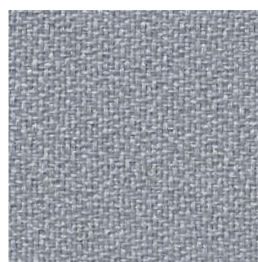
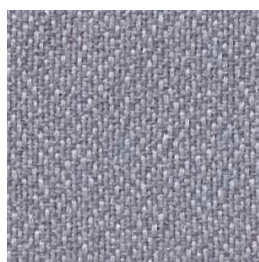




A 52 silver



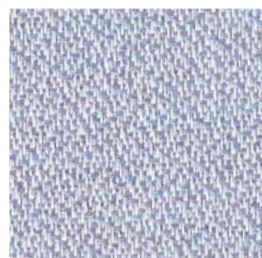
A 50 medium grey



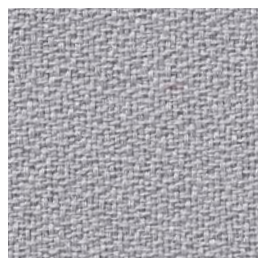
A 53 nickel



A 64 anthracite



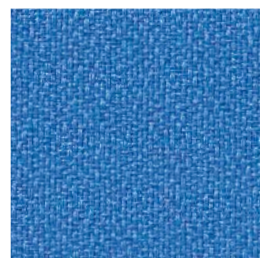
A 51 heather



A 98 stone



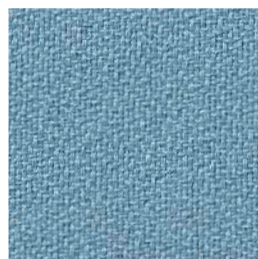
A 59 steel



A 70 cyan blue



A 68 sky



A 79 baltic sea



A 54 reseda



A 80 spring



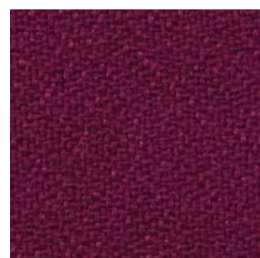
A 56 daylight blue



A 62 dark blue



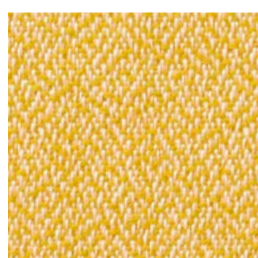
A 93 purple



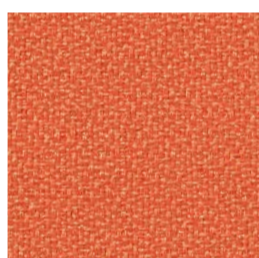
A 92 bordeaux



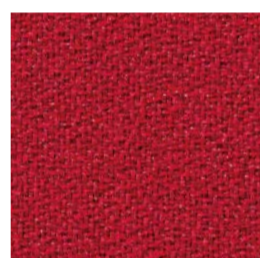
A 66 yellow



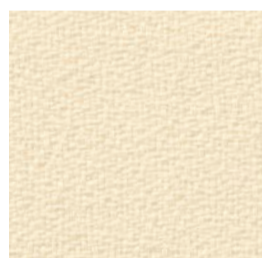
A 57 sunshine



A 73 orange



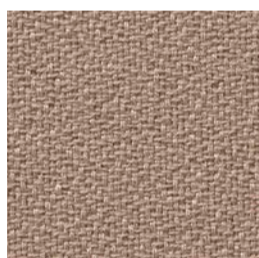
A 65 red



A 99 beach



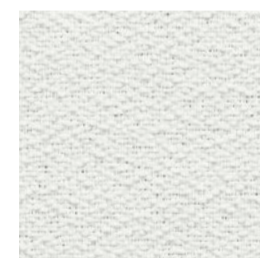
A 100 grit



A 101 nougat



A 67 terracotta



A 112 white

Technische Beschreibung

Materialzusammensetzung 100 % Polyester Trevira CS
 Gewicht ca. 400 g/lfm.
 Breite 170 cm
 Brandschutz DIN 4102 B1, entspricht den
 Normen in Deutschland
 Scheuerfestigkeit 20.000 Touren nach Martindale
 Lichtechtheit 5 - 6
 Reinigung Mit einem feuchten Tuch abwischen.

Description technique

Composition 100 % Polyester Trevira CS
 Poids ca. 400 g/lfm.
 Largeur 170 cm
 Classement feu M1
 Résistance à l'usure 20.000 mouvements
 selon Martindale
 Solidité à la lumière 5 - 6
 Nettoyage Essuyez avec une étoffe humide.

Technical Specifications

Composition 100 % Polyester Trevira CS
 Weight Approx. 400 g/lfm.
 Width 170 cm
 Flammability DIN 4102 B1
 Abrasion resistance 20.000 rubs according
 to Martindale
 Colourfastness to light 5 - 6
 Maintenance Wipe clean with a damp cloth.

Descrizione Tecnica

Composizione 100 % Poliestere Trevira CS
 Peso ca. 400 g/lfm.
 Altezza 170 cm
 Resistenza al fuoco M1-DIN 4102 B1
 Resistenza all'abrasione oltre 20.000 "sfregamenti"
 secondo Martindale
 Resistenza del colore alla luce 5 - 6
 Manutenzione Pulire con panno umido.

Die Größe der abgebildeten Stoffstrukturen entspricht nicht immer dem Originalstoff. Farbabweichungen sind aus drucktechnischen Gründen möglich.

The size of the materials structure shown does not always correspond to the original material. Due to the limitations of the printing process the materials and colours shown are not always a true copy of the original.

La dimension des structures de matériau représentées ne correspond pas toujours au matériau d'origine. Pour des raisons techniques d'impression, des variations de teintes sont possibles.